

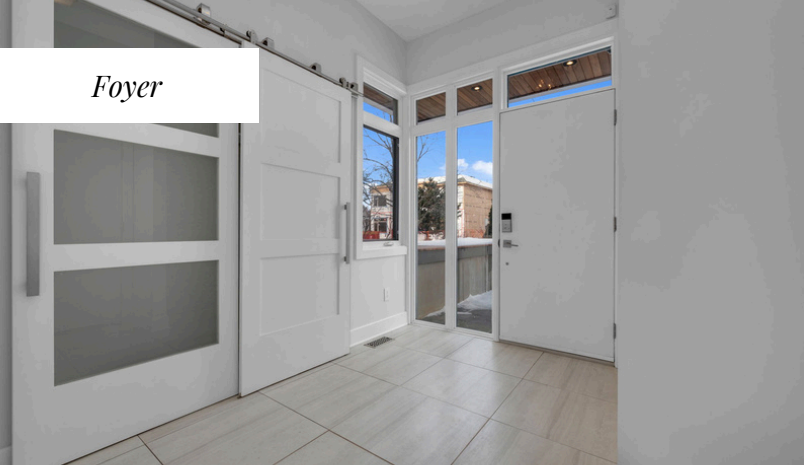


290 Dovercourt Avenue

\$1,599,000



THE
RE/MAX
COLLECTION®



Foyer



Powder Room



Kitchen



Information herein deemed reliable but not guaranteed.

Home Details

- Nestled in the charming neighbourhood of Westboro/Hampton Park, this 2-storey single family infill has an amazing roof top deck. Custom built in 2014 by Timberville Developments.
- In close proximity to the shops and restaurants of Wellington Street. Multiple recreation facilities close by, including the Dovercourt Recreation Centre, good public transit, schools, and easy access to downtown.
- Huge rooftop patio with 360 degree views of Westboro & Gatineau!

Main Floor

- Walk up the landscaped steps to the modern front door.
- As you enter this stunning home, you are greeted by an expansive front foyer featuring large-format tiles that create a sleek and modern first impression. The foyer offers convenient inside access to the single-car attached garage, which is equipped with a Level 2 Electric Vehicle charging outlet, ensuring easy and efficient charging for your electric vehicle.
- The front foyer also includes a spacious closet with stylish, modern industrial barn-style doors, adding a touch of contemporary charm. For added convenience and elegance, the foyer is complemented by a thoughtfully designed powder room.
- Gorgeous hardwood floors with an exceptionally durable finish flow seamlessly throughout the kitchen, dining, and family room, enhancing the home's warmth & elegance. The open-concept layout fosters an inviting atmosphere, perfect for both everyday living and entertaining.
- The home's sense of grandeur is further amplified by 9-foot ceilings on both the main & second levels, creating an open and airy feel. Large, expansive windows throughout allow natural light to flood the interior.
- In the evening a perfect combination of pot lights and designer lighting illuminate the home.
- This modern kitchen, expertly designed by Astro Design Centre, is a chef's dream. It offers generous quartz countertops, including a striking waterfall center island with seating for four—perfect for casual dining or entertaining. Built-in pantries in both the kitchen & dining area provide exceptional storage & easy access to all your culinary essentials. High-end stainless steel appliances stand ready to assist in meal preparation, complemented by abundant cabinetry offering ample storage & workspace. The kitchen features glass-tiled backsplash, under-cabinet lighting, and soft-close pot & pan drawers for added convenience. Pendant lighting above the island & recessed pot lighting throughout further illuminate the space, creating a warm & inviting atmosphere. Top-of-the-line appliances include a Bosch 4-burner gas stove, a Sharp drawer microwave, a Bosch hood fan, a Liebherr refrigerator, and a Bosch dishwasher—ensuring that every culinary need is met with both ease and sophistication.
- The impressive dining room is open to the second floor, featuring a striking six-pane window that floods both levels with an abundance of natural light. This design element enhances the sense of space, creating a bright and airy ambiance throughout the room. With ample room to accommodate a sizable dining table and china cabinet, this space is ideal for hosting family gatherings and formal dinners. Additional thoughtful details include a built-in beverage fridge with a prep area.
- The main floor family room is a true focal point of the home, featuring a stunning linear gas fireplace. The fireplace is set against a dramatic floor-to-ceiling stone surround, creating a sense of warmth and elegance. Above the fireplace, a convenient plug-in is ready to support a wall-mounted TV, ensuring an optimal viewing experience from every angle in the room.
- Two double patio doors enhance the family room's connection to the outdoors, offering easy access to the beautifully landscaped backyard and raised hardscaped patio. These doors provide expansive views of the tranquil outdoor space, seamlessly blending the indoors with nature. The patio is the perfect setting for al fresco dining, relaxation, or entertaining, offering an extension of the home's living space. This family room combines style, comfort, and functionality, making it the perfect place to unwind or gather with loved ones.

Family Room



Family Room



Dining Room



Information herein deemed reliable but not guaranteed.

Second Floor

- The second floor is gracefully accessed via a set of open riser stairs, designed to create an airy and contemporary feel. The staircase features sleek stainless steel spindles, adding a touch of modern elegance. The dramatic, darker stained railings beautifully complement the rich tones of the stairs, enhancing the overall design aesthetic.
- The second level is beautifully appointed with high-quality hardwood flooring that extends throughout the hallway and bedrooms.
- There are 3 bedrooms in total on this level.
- The spacious primary bedroom offers a tranquil retreat, combining ample space with exceptional comfort. It features a luxurious 4-piece ensuite, thoughtfully designed to create a private sanctuary for relaxation and rejuvenation. As an added bonus, the primary bedroom also includes a large private balcony off the ensuite—a perfect outdoor getaway to enjoy fresh air, peaceful views, or simply a moment of solitude.
- The thoughtfully designed ensuite offers a sophisticated and luxurious retreat. A large floating quartz vanity with a spacious sink and convenient drawer storage provides both functionality and style. The generous shower, featuring a high-quality tile surround and glass doors, creates an elevated bathing experience. A waterfall shower head enhances the sense of luxury, offering a soothing and spa-like feel. Patio doors with a transom window above flood the space with natural light, while recessed pot lights overhead ensure the room remains bright and inviting. To add an extra layer of comfort, radiant heat flooring, meticulously tiled to perfection, provides warmth and relaxation throughout the room.
- Two additional well-proportioned bedrooms grace the upper level, each offering ample closet space to accommodate storage needs. Large windows fill the rooms with an abundance of natural light, creating bright and airy spaces.
- The main bathroom exudes both style and practicality, featuring a spacious floating vanity with a sleek quartz countertop, complete with two undermount sinks and ample cabinet space for all your storage needs. The floating toilet enhances the modern aesthetic, while the luxurious soaker tub, adorned with a tasteful tiled surround, invites moments of relaxation and indulgence. For added convenience, built-in shelves provide an organized space to store towels and other essentials.
- The laundry room is designed for both functionality and style, featuring front-loading washer & dryer units with quartz counters above, & a drying rack above provide convenience for everyday laundry tasks.
- In the hall way there is a large linen closet and extra storage under the stairs leading to the roof top deck.

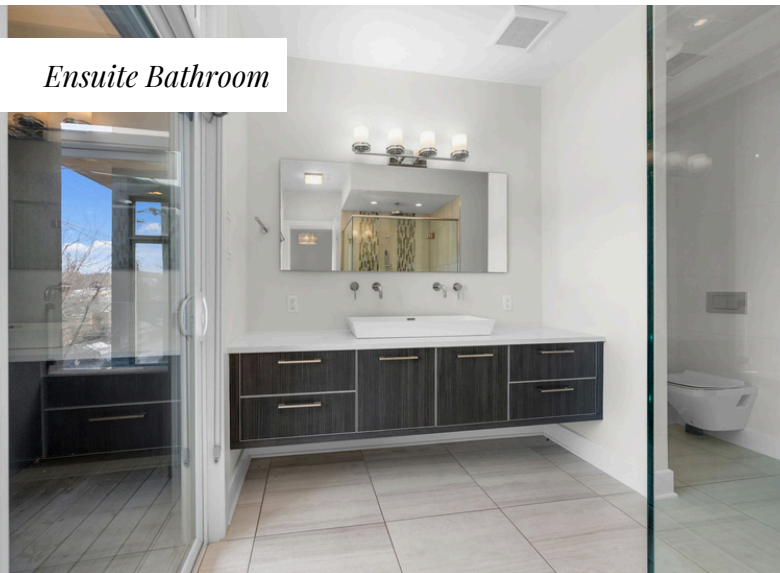
Third Floor

- A stunning hardwood staircase leads you up to the expansive rooftop deck, where you can enjoy breathtaking 360-degree panoramic views of the surrounding neighborhood. This serene outdoor space offers the perfect setting to unwind, whether you're savoring a quiet morning coffee or enjoying a peaceful evening under the stars. The rooftop deck provides a unique opportunity to experience both the beauty and tranquility of your surroundings in a private, elevated retreat.

Primary Bedroom



Ensuite Bathroom



Information herein deemed reliable but not guaranteed.

Bedroom 2



Bedroom 3



Room Sizes

Main Floor

Foyer - 9'11" x 8'5"
Kitchen - 13'2" x 9'10"
Family Room - 21'9" x 13'11"

Powder Room - 6'7" x 3'2"
Dining Room - 15'3" x 11'5"

Second Floor

Primary Bedroom - 13'6" x 11'0"
Walk-in Closet - 7'7" x 7'7"
Main Bathroom - 8'5" x 7'6"
Bedroom - 12'2" x 10'5"

4-piece ensuite - 11'7" x 9'10"
Laundry Room - 8'6" x 4'7"
Bedroom - 15'8" x 10'10"

Lower Level

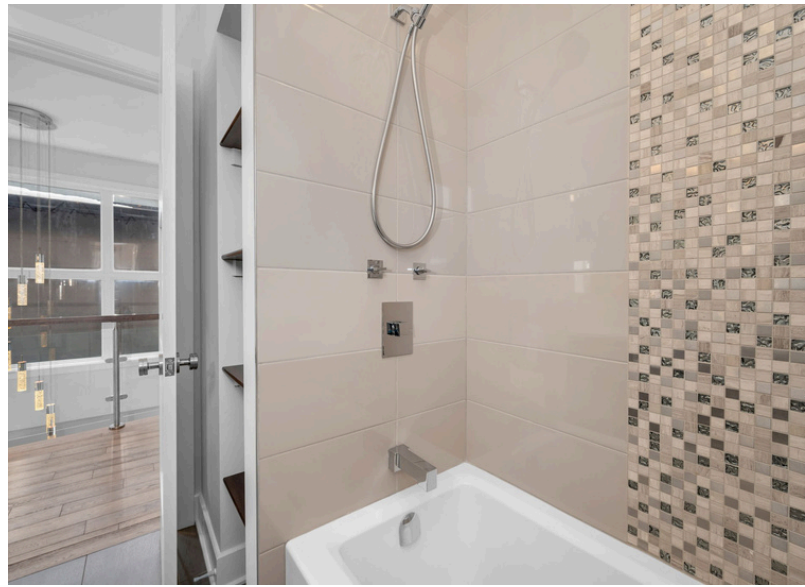
Recreation Room - 21'11" x 20'2"
3-piece Bathroom - 8'11" x 4'11"
Storage Room - 12'9" x 9'7"

Den/Office - 6'9" x 6'4"
Utility Room - 12'2" x 7'2"

Balcony



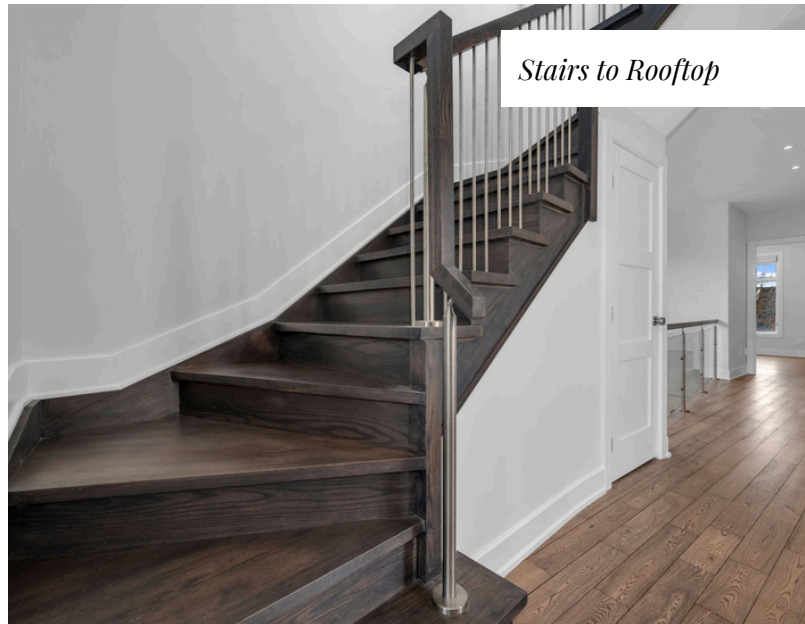
Full Bathroom



Laundry Room



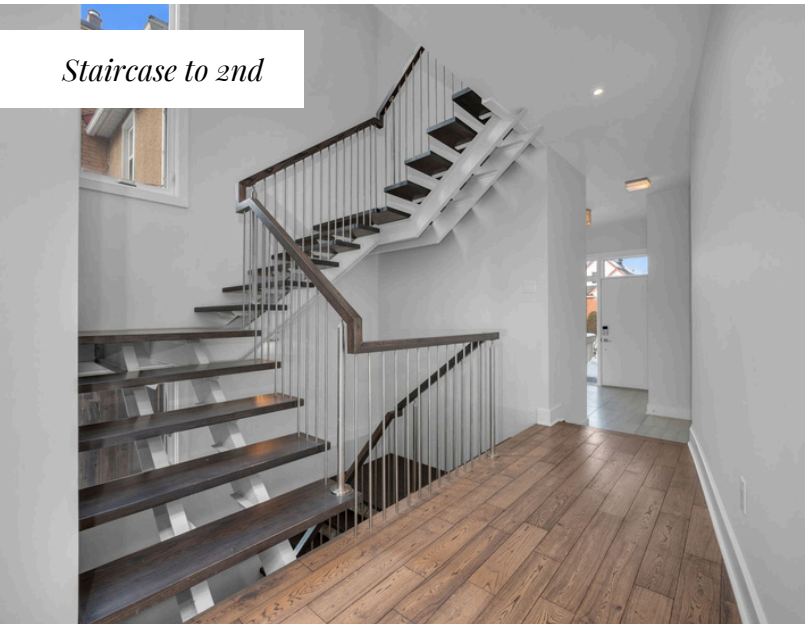
Stairs to Rooftop



Roof Top Deck



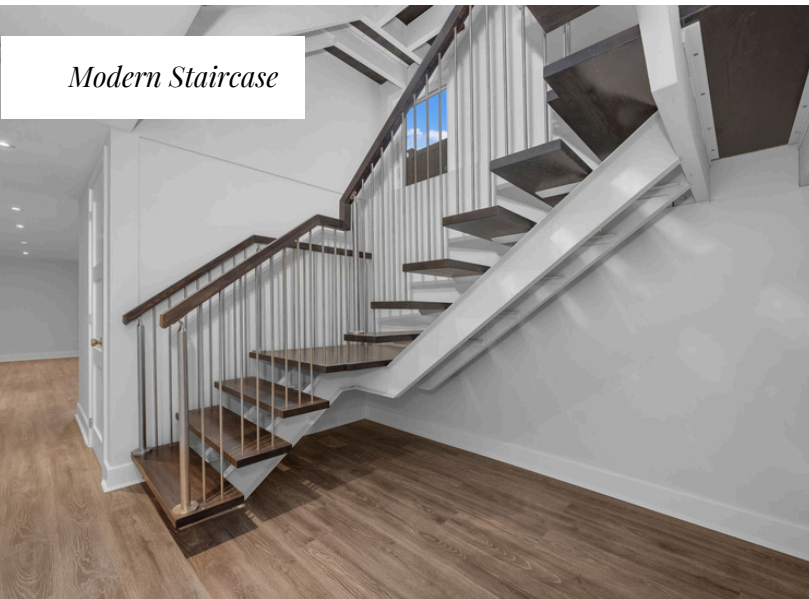
Staircase to 2nd



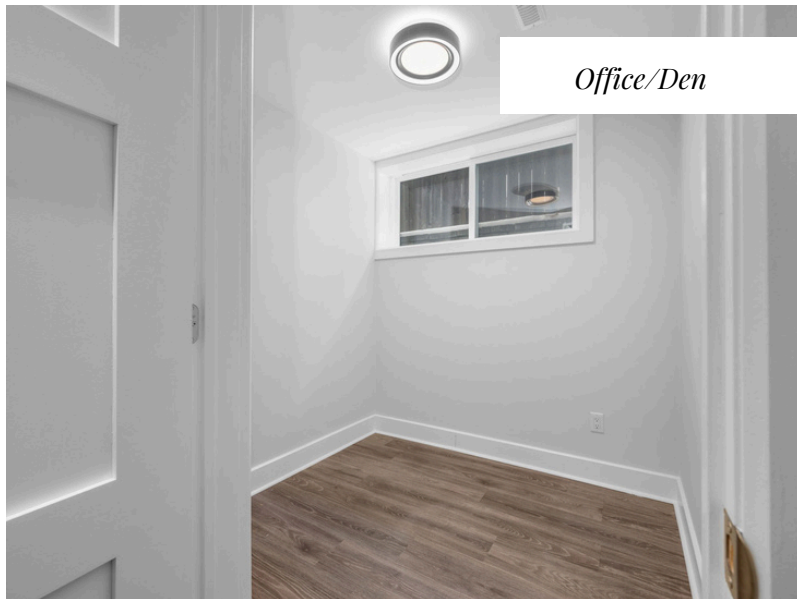
Glass railing



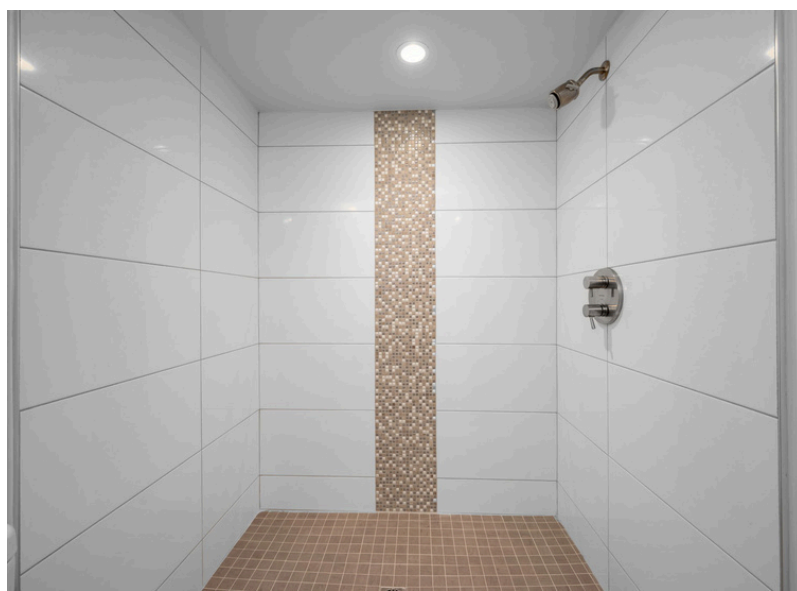
Modern Staircase



Office/Den



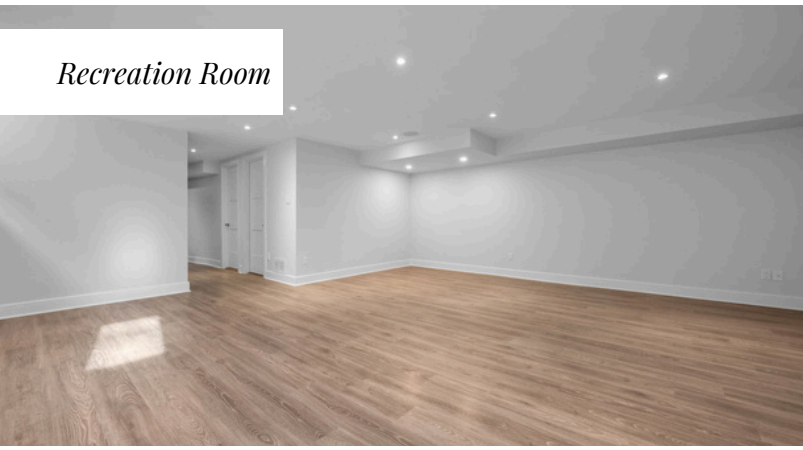
3-piece Bathroom



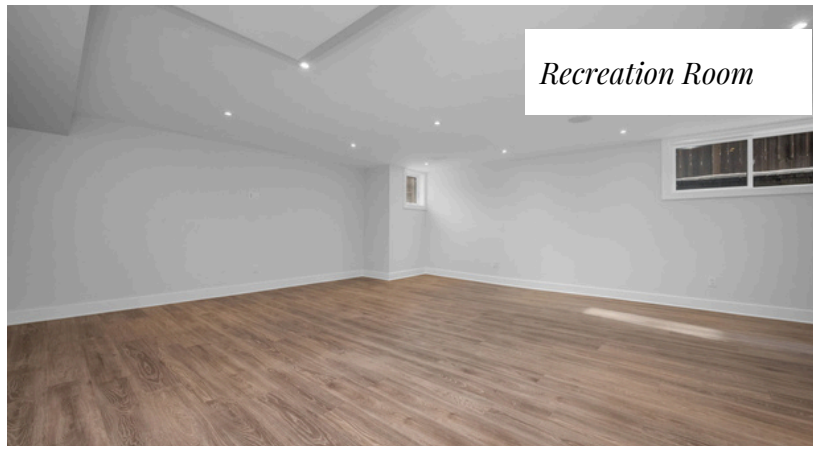
Front in Fall



Recreation Room



Recreation Room



Recreation Room



Home Details

Lower Level

- The lower level is beautifully finished, featuring luxurious vinyl flooring that combines style with durability. Enhanced with radiant floor heating, this space ensures optimal comfort throughout the year. An abundance of pot lights illuminates the room, creating a bright and inviting atmosphere. Whether used as a recreation area, home office, or entertainment space, the lower level provides both warmth and sophistication, offering a welcoming environment for all occasions.
- The lower level offers a spacious recreation room, perfect for relaxing, entertaining, or creating a home theater setup. Additionally, there is a versatile office/hobby room, ideal for work, creative pursuits, or personal projects. A well-appointed three-piece bathroom adds convenience and functionality to the space, ensuring that this lower level can accommodate a variety of needs.
- Completing the lower level is the furnace and mechanical rooms, both providing storage.
- This home is equipped with smart wiring, allowing for seamless integration of advanced technology throughout the space.

Home Details:

Other Info:

Builder: Timberville Developments

Year Built: 2014

Municipal Taxes 2024: \$ 12,436.22

Legal Description: PART LOT 25 PLAN 310 PART 1 PLAN 4R26665 CITY OF OTTAWA

Inclusions: 2 Fridges, gas stove, microwave, hood fan, dishwasher, washer, dryer, hot water on demand system, garage door opener, central vacuum.

Exclusions: None

Rental: None

Summer Patio



The Joanne Goneau Team

Ray Otten, Broker

613-288-0090

ray@ottawaproperties.com

www.ottawaproperties.com

RE/MAX
Absolute Realty Inc.

Brokerage, Each Office Independently Owned and Operated.