



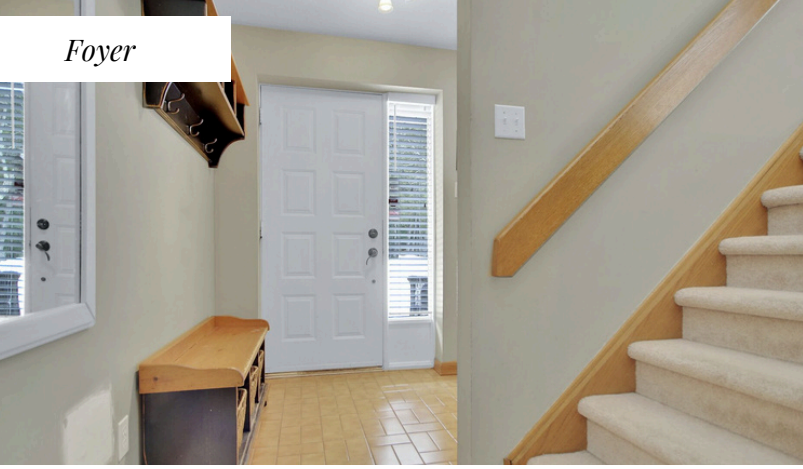
752 King's Creek Road

\$859,900

RE/MAX
Absolute Realty Inc.
Brokerage, Each Office Independently Owned and Operated.

Information herein deemed reliable but not guaranteed.

Foyer



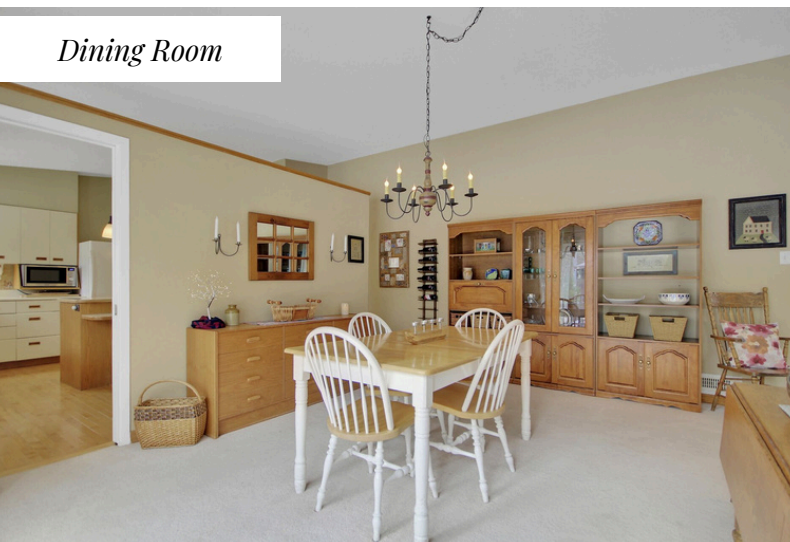
Living Room



Living Room



Dining Room

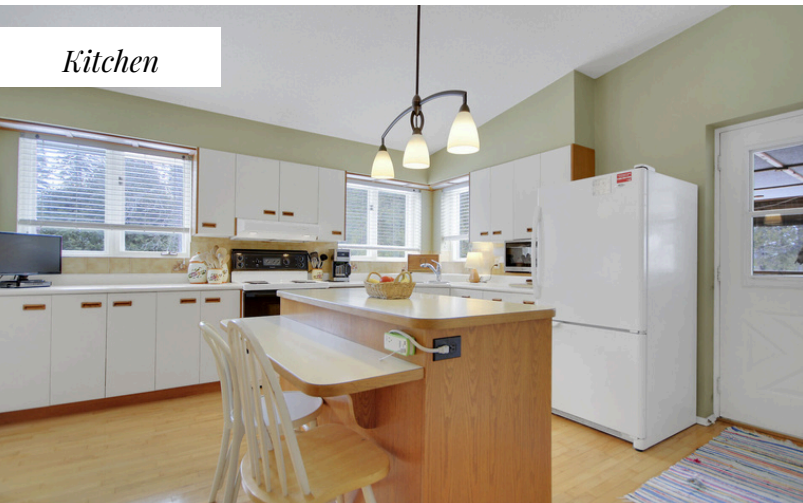


Information herein deemed reliable but not guaranteed.

Kitchen



Kitchen



Kitchen



Home Details

- Welcome to this charming 3-bedroom, 2-bathroom family high ranch home nestled on a serene 20 acres of land in Beckwith Township.
- This property offers a tranquil retreat surrounded by mature trees and natural beauty.
- Private long driveway with a circular go around for easy turning arolund.
- Interlocking brick driveway with parking for 4 and many more in the laneway.
- Oversized double car garage with 2 single car doors and plenty of space for all the toys.
- Nearby is the log cabin which is a perfect spot for a retreat or kids playhouse, next to the outdoor firepit for those summer and fall evenings under the stars.
- Enjoy 20 acres of treed land perfect for recreational use by the whole family.
- Nearby schools are Beckwith Public school and Carleton Place High School, with school bus service. Recreation complex nearby is the Beckwith Recreation Complex.

Information herein deemed reliable but not guaranteed.

Home Details

Main Floor

- Enter the home into a foyer featuring tile floors, a coat closet & an inviting front door.
- Step into the expansive living room, a warm and inviting space perfect for family gatherings. Bathed in natural light from multiple windows, it offers a stunning view of the surrounding property. The room features quality carpeting throughout and is anchored by a striking wood-burning fireplace set within a brick wall, complete with built-in wood storage and a charming mantle. The vaulted ceiling enhances the room's sense of openness, adding to its airy and spacious atmosphere.
- The dining room offers ample space for a family table and buffet, making it ideal for entertaining. Large patio doors open to the deck, seamlessly blending indoor and outdoor living and creating an inviting atmosphere for gatherings.
- The Handover kitchen, featuring a central island, offers plenty of counter space and abundant cabinetry, including pantry cupboards for ample storage. The island provides seating for three, while numerous windows flood the space with natural light. A vaulted ceiling enhances the open, airy feel, and hardwood flooring adds warmth and elegance. Pendant lighting over the island adds a stylish touch, and a window above the sink offers a pleasant view of the outdoors. Included appliances are a refrigerator, stove, hood fan, dishwasher, and upright freezer.
- Step through the exterior door into the charming 3-season sunroom, featuring windows and, in the summer, complete screening for a breezy, bug-free experience. With overhead electric lighting, this space is perfect for entertaining or simply unwinding while watching the sunset. Enjoy breathtaking views of your private oasis, offering a serene and picturesque backdrop for relaxation.
- The primary bedroom is a thoughtfully designed sanctuary, boasting a spacious layout, expansive picture windows, and ample storage with two generous closets. A vaulted ceiling enhances the airy ambiance, creating a serene and inviting retreat within the home.
- The main bathroom and laundry room has a vanity with cabinets, a tub with tile surround, toilet, washer, dryer, laundry sink and a picture window.

Lower Level

- Quality carpeted stairs lead to the lower level offering quality carpeted floors.
- Renovated in 2014, the lower level offers a spacious recreation room featuring a cozy woodstove, built-in shelving and cabinets for ample storage, and large windows that fill the space with natural light. With plenty of room for family gatherings, it also includes a versatile area perfect for a home office or gym.
- Step into the greenhouse, a perfect haven for gardening enthusiasts or simply a warm, sunlit escape on crisp winter days.
- This level features two spacious bedrooms, each offering ample closet space and abundant natural light streaming in through large picture windows.
- The 3-piece bathroom offers vanity with built-in sink and 2 drawers, 1-piece shower with glass door, toilet and double closet which contains the HWT (2019) and sump pump (2022) for the bathroom.
- There is a generous workshop with large window offering natural light.

Other Details:

- The expansive 20-acre lot offers endless possibilities for outdoor activities, gardening, or simply enjoying the peace and privacy of rural living.
- Despite its secluded setting, the property is conveniently located near essential amenities and main roads, providing a perfect balance between tranquility and accessibility.
- Don't miss the opportunity to own this delightful home that combines comfortable living spaces, modern updates, and a vast natural setting.

Home Details

Updates to the home:

- Septic system 2008
- Upstairs blinds 2008
- Chimney repair 2010
- Eavestroughing 2010
- Washer and dryer 2012
- Fireplace repair 2012
- Complete basement renovation 2014
- Window repairs 2016
- Air conditioner unit 2019
- Hot water Tank 2019
- Garage roof 2020
- Sump pump for basement bathroom 2022
- Well pump and water pressure tank 2022
- Electric furnace & thermostat 2022
- Air exchange unit 2023

Sunroom



Sunroom



Main Bathroom

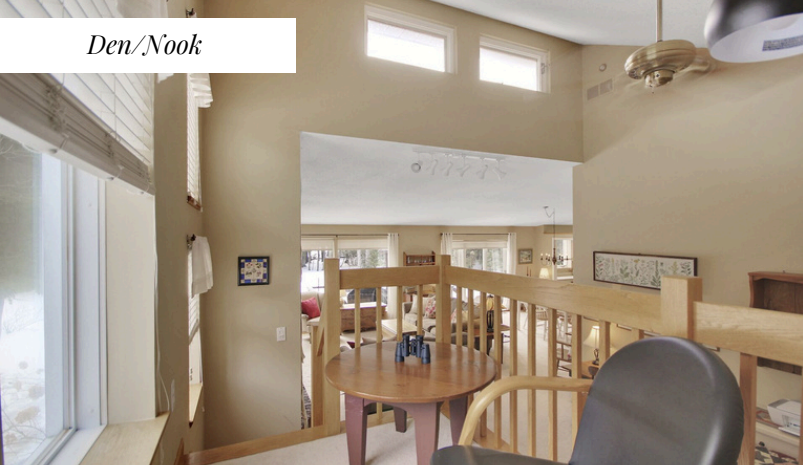


Laundry in Bath

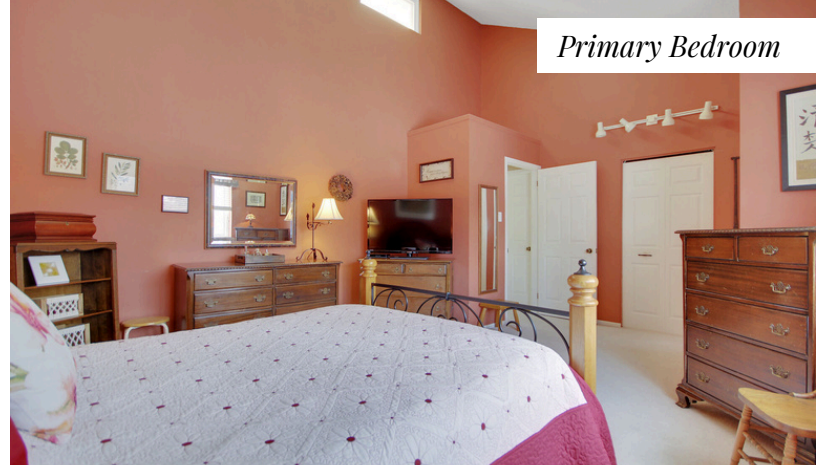


Information herein deemed reliable but not guaranteed.

Den/Nook



Primary Bedroom



Primary Bedroom



Room Sizes

Main Floor

Foyer - 6'6" x 5'4"
 Living Room - 20'9" x 14'10"
 Kitchen - 13'8" x 12'10"
 Primary Bedroom - 18'3" x 13'4"

Den/Hobby 9'6" x 5'0"
 Dining Room - 16'3" x 12'4"
 Sunroom - 15'3" x 13'8"
 Bath/Laundry - 13'3" x 8'4"

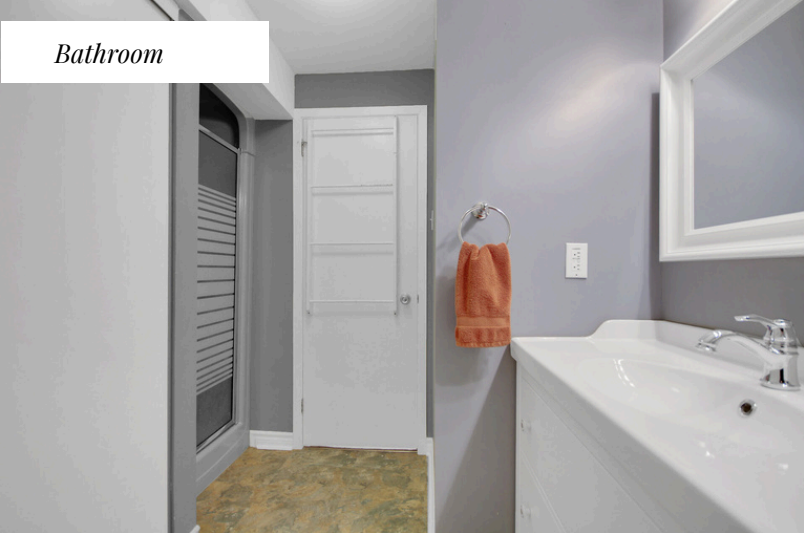
Lower Level

Recreation Room - 27'10" x 15'1"
 Bedroom #2 - 13'6" x 9'6"
 Bedroom #3 - 12'6" x 11'7"
 Utility Room - 12'7" x 7'3"

Green House - 10'1" x 5'3"
 3-Piece Bath - 8'11" x 8'11"
 Workshop - 15'1" x 12'4"

Information herein deemed reliable but not guaranteed.

Bathroom



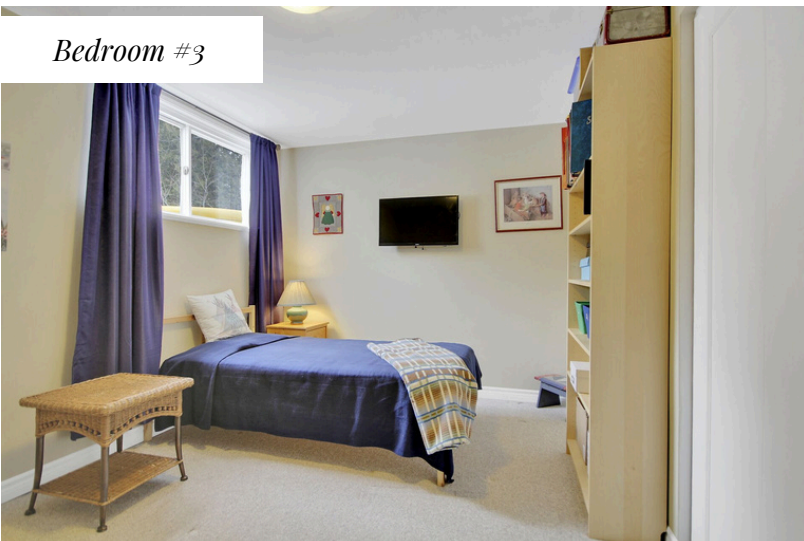
Bedroom #2



Bedroom #2



Bedroom #3



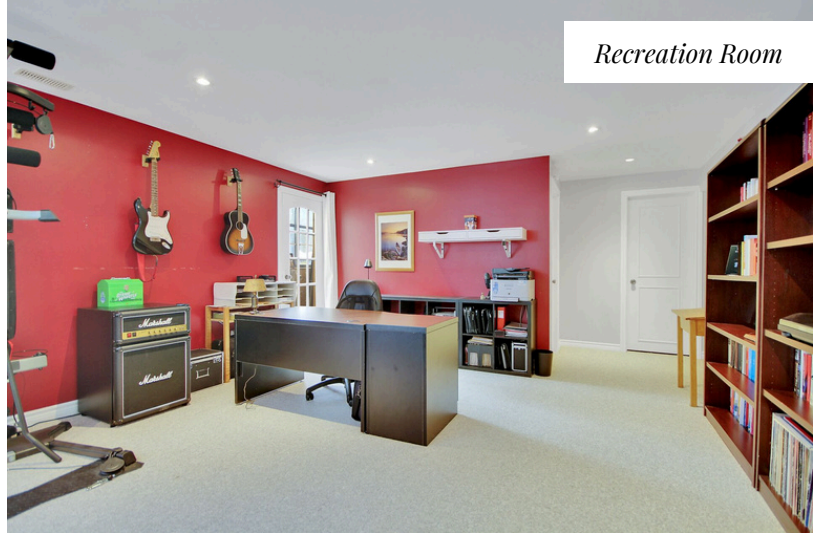
Bedroom #3



Greenhouse



Recreation Room



Recreation Room



Workshop



Deck



Information herein deemed reliable but not guaranteed.

Home Details

Year Built: 1986 Approximately

Property Taxes: \$2023.15 2024

Lot Size: 1822 feet x 256 feet approximately - irregular lot - 20.08 acres approximately

Legal Description: PT NE1/2 LT 21 CON 3 BECKWITH PT 2, 27R1694 EXCEPT PT 1, 27R5007; BECKWITH

Above Grade Finished: 1385 sq.ft per MPAC

Inclusions: Dishwasher, Dryer, Hood Fan, Refrigerator, Stove, Upright Freezer, Washer, Auto Garage Door Opener, Hot Water Tank, Water Softener, Window Blinds, drapes and tracks, double sump pump, well pump, all attached shelving, log cabin, shipping container in yard.

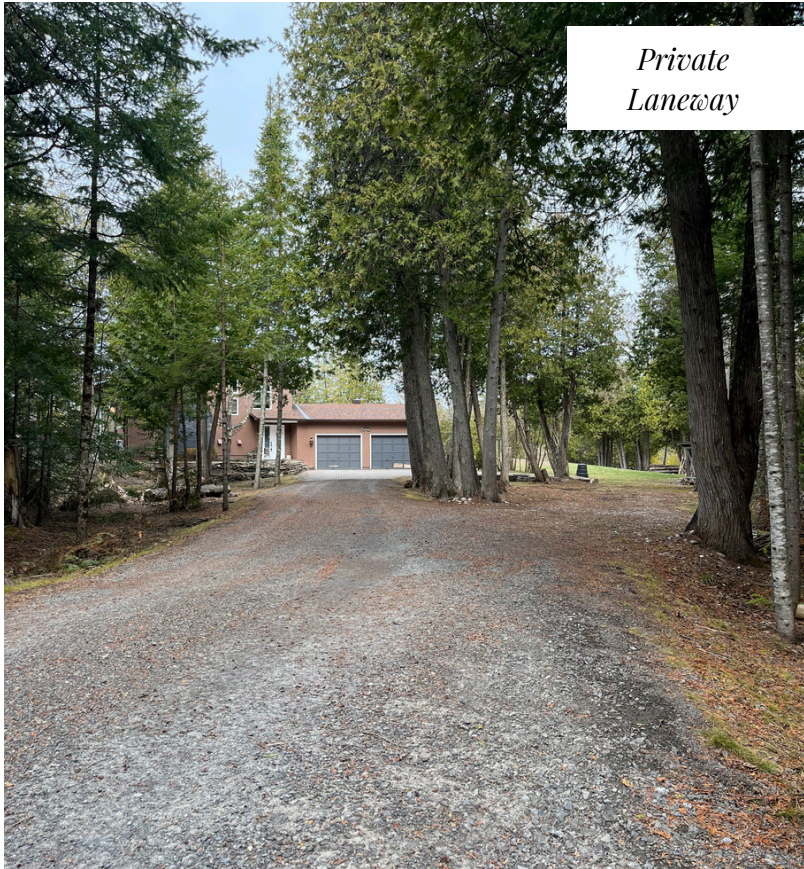
Rental Equipment: None

Possession: TBA/Flexible

Back of house



*Private
Laneway*



Log Cabin



The Joanne Goneau Team

Joanne Goneau

Broker of Record/Owner

Direct: 613-851-8952

Email: joanne@joannegoneau.com

www.ottawaproperties.com